

9 AMPLITUDE NOISE

A reference signal is not needed for this measurement. The signal to be tested directly drives the PN-9000 which is equipped with a wide-band amplitude detector (10 MHz to 18 GHz). Figure 17 shows the configuration.

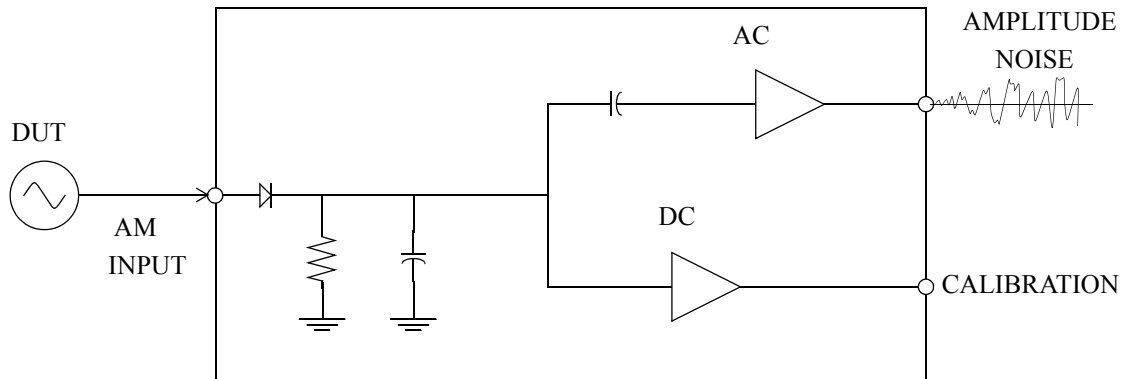


Figure 17

Calibration is conducted by modulating the amplitude of the source to be tested. The demodulation slope of the detector is then calculated.

The PN-9000 aids in this sometimes difficult procedure by allowing calibration on CW levels. The PN-9000 calculates the demodulation slope for this continuous detection.